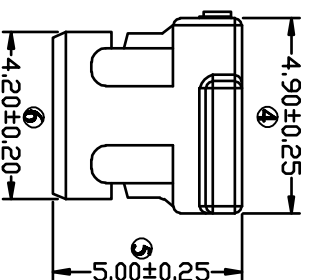
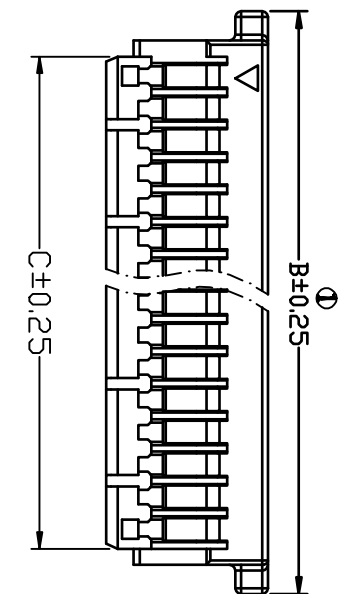
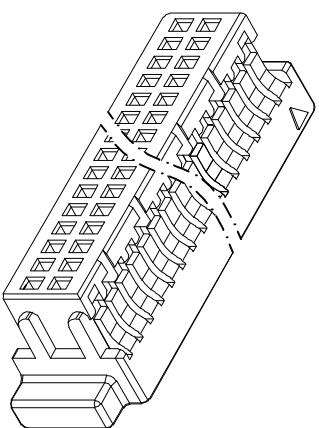
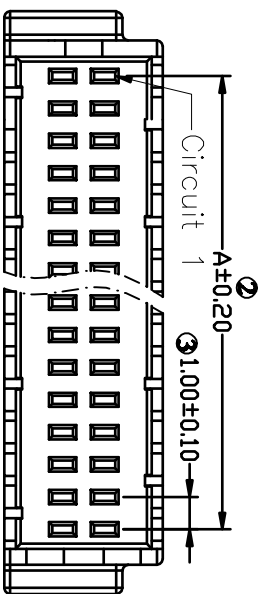


环保物料



| Part No. | Dimensions (mm) | |
|--------------|-----------------|-------|
| | A | B |
| J1002HA-2*5 | 4.00 | 8.00 |
| J1002HA-2*6 | 5.00 | 9.00 |
| J1002HA-2*8 | 7.00 | 11.00 |
| J1002HA-2*10 | 9.00 | 13.00 |
| J1002HA-2*15 | 14.00 | 18.00 |
| J1002HA-2*20 | 19.00 | 23.00 |
| J1002HA-2*25 | 24.00 | 28.00 |

- Specifications(规格) :
 - Voltage rating(额定电压) 50V AC/DC
 - Current rating(额定电流) : 1A AC/DC
 - Withstanding voltage(耐压值) : 500V AC/minute
 - Temperature range(工作温度) : -25°C~+85°C
 - Insulation resistance(绝缘电阻) : ≥100MΩ
 - Contact resistance(接触电阻) : ≤20mΩ
 - After environmental testing(环境测试后) : ≤30mΩ
- Housing(胶壳)
 - Part No. (料号) : J1002HA
 - Poles (PIN数) : 10、12、16、20、30、40、50
 - Material (材质) : PBT UL 94V-0
 - Suitable HLB J1002T Series Terminal(匹配J1002T系列端子)
 - Mates With HLB J1002W Series Dual Row Wafer (匹配J1002W双排系列针座)
 - Q'ty (数量) : 1,000Pcs/Bag/每袋 (1,000Pcs)

| | | | | | | | | | |
|------------|-------------|-------------|------------------|--------|---------|-------------------------------------|---------|------------|--------------|
| 2011/05/14 | | 修改图框格式 | | —般公差 | | 东莞市翰皓精密电子有限公司 | | 料号 PART NO | |
| 日期 DATE | 旧版本 QLD REV | 新版本 NEW REV | 变更内容 DESCRIPTION | 审核 CHK | 批准 APPD | 角法 PROJECT | 批准 APPD | 审核 CHK | 日期 DATA |
| 1 | A | B | | | | ±0.3 .IX ±0.2 .XIX ±0.1 | 刘旭 | 2007/05/03 | J1002H-2*XXP |
| | | | | | | 1.0 mm Crimp Style connectors | | 单位 UNIT | |
| | | | | | | 1/1 | | 图号 NUMBER | |
| | | | | | | A-013 | | 版本 REV | |
| | | | | | | B | | | |