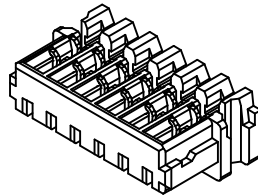
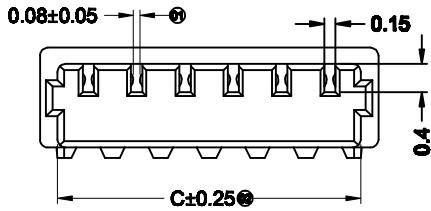
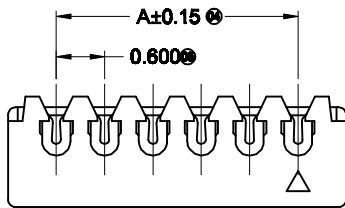
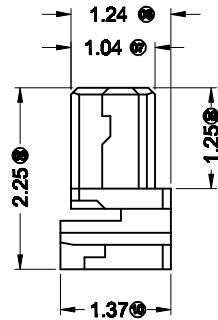
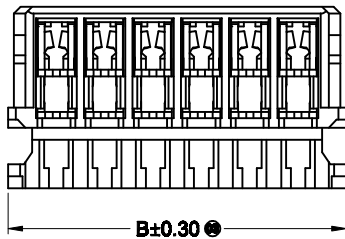


RoHS



■ Specifications :

- Voltage rating: 30V AC / DC
- Current rating: 0.2A AC / DC
- Withstanding voltage: 200V AC/minute
- Temperature range: -25°C→+85°C
- Insulation resistance: ≥100MΩ
- Contact resistance: ≤30mΩ
- After environmental testing : ≤40mΩ
- Material(Terminal):Phosphor Bronze
- Wire Range:AWG#36/AWG#34
- Insulation O.D.:0.32mm(Max)
- Mates With HLB Wafer: J0600WR



Poles	Dimensions(mm)			Poles	Dimensions(mm)		
	A	B	C		A	B	C
02	0.60	1.80	1.35	12	6.60	7.80	7.35
03	1.20	2.40	1.95	13	7.20	8.40	7.95
04	1.80	3.00	2.55	14	7.80	9.00	8.55
05	2.40	3.60	3.15	15	8.40	9.60	9.15
06	3.00	4.20	3.75	16	9.00	10.20	9.75
07	3.60	4.80	4.35	17	9.60	10.80	10.35
08	4.20	5.40	4.95	18	10.20	11.40	10.95
09	4.80	6.00	5.55	19	10.80	12.00	11.55
10	5.40	6.60	6.15	20	11.40	12.60	12.15
11	6.00	7.20	6.75	22	12.00	13.20	12.75

							<b>GENERAL TOLERANCE</b> X ±0.30 JX ±0.20 JXX ±0.10		<b>东莞市翰皓精密电子有限公司</b> DONGGUAN HANHAO PRECISION ELECTRONIC CO.,LTD				<b>PART NO.</b> J0600HG-JXX					
							<b>PROJECT</b> Jova		<b>APPROVAL</b> W.X.T		<b>CHECK</b> Allen		<b>DATA</b> 20130721		<b>TITLE</b> 0.60mm IDC Style Connectors			
<b>DATE</b>	<b>OLD REV</b>	<b>NEW REV</b>	<b>ECN</b>	<b>DESCRIPTION</b>	<b>CHECK</b>	<b>APPROVAL</b>	<b>UNIT</b>	<b>SCALE</b>	<b>NUMBER</b>	<b>REV</b>								
							mm	1:1	A-00	A								